

## 物料清单

## 可选配件


 ① 塑钢带  
SK-SL-AL10

 ② 钢带  
SK-SL-BL10

 工具包  
SK-SL-0001


剪刀

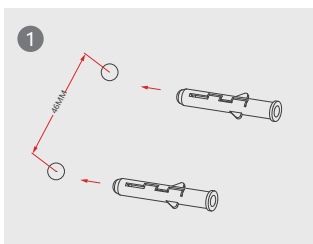


手套

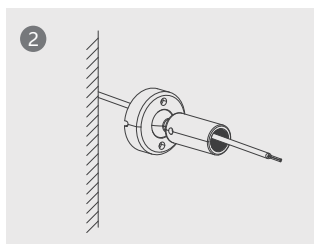

 基本配件  
SK-SL

- ③ 螺丝杆
- ④ 旋转杆
- ⑤ 底部盒
- ⑥ 接线端子
- ⑦ 螺丝
- ⑧ 胶塞
- ⑨ 六角螺丝刀

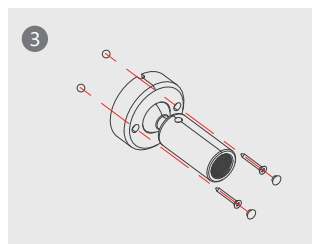
## 安装步骤



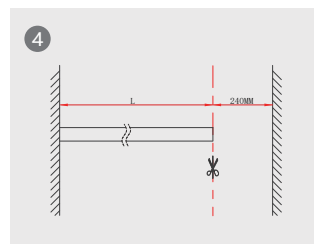
1 在安装墙上钻2个直径为6mm的孔位，两个孔位之间的距离为42mm，安装塑胶膨胀管；



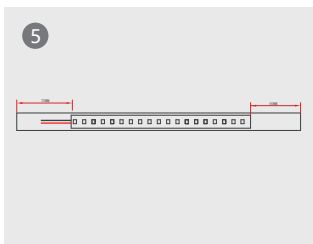
2 连接DC24V的线穿过底盒及旋转杆。



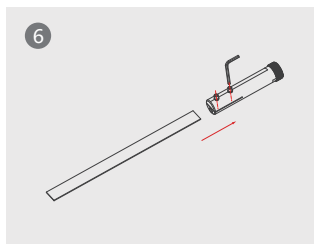
3 将螺丝杆穿过底座盒，固定底座盒到墙上，请固定带有线的旋转杆到底部盒的接线头。



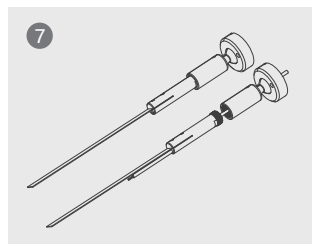
4 测量安装墙的距离，塑钢带（钢带）的剪切长度要比测量长度L短240mm。



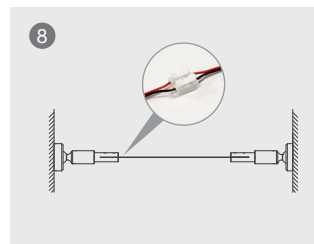
5 粘贴LED灯带到塑钢带（钢带）上，开始端预留70mm，尾端预留50mm。



6 固定塑钢带（钢带）到螺丝杆。

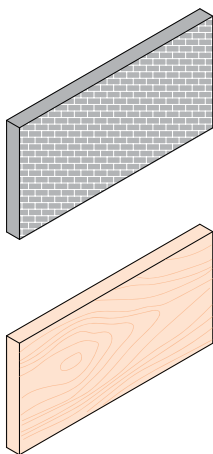
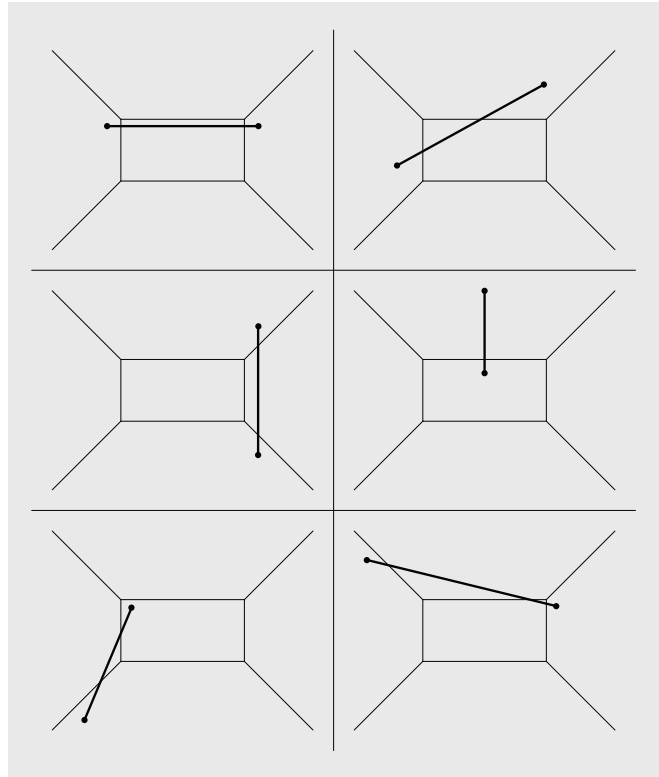
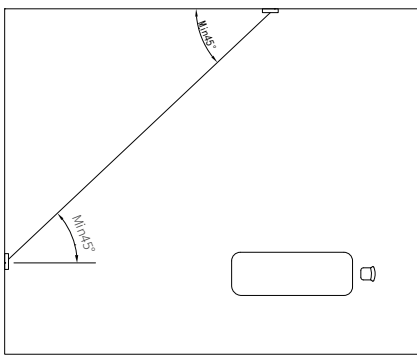
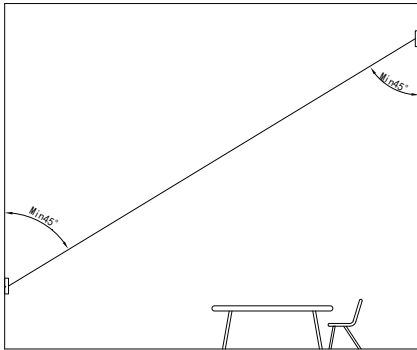


7 先固定带有LED灯带出线一端的螺丝杆，再固定另外一端螺丝杆。



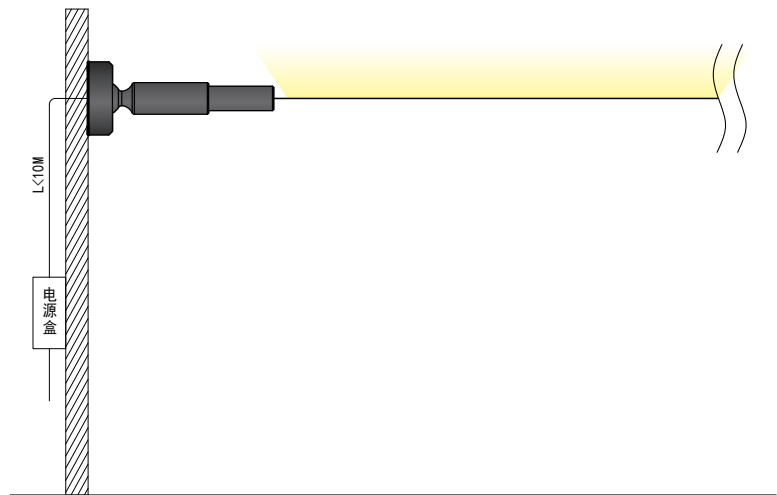
8 将两边出线接入按压快速端子上连接。

安装指引



砖墙

木头



注意事项:

- 1、将产品尽量安装在合适的环境中, 安装表面必须是实心的木墙、混凝土墙、砖墙, 请勿安装在石膏墙或者空心墙表面;
- 2、安装裁切钢带时请配套护目镜及防护手套, 钢带具有弹性请在确认安全的情况下打开钢带包装;